

YEAR

2022

LINK CHEONG WAN RD & GILLIES AVE S (from HUNG HOM  
STATION to WUHU ST)

COVERAGE (B) STATION

4207

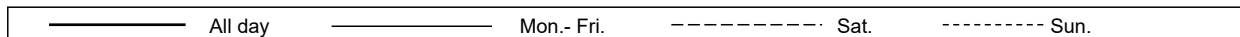
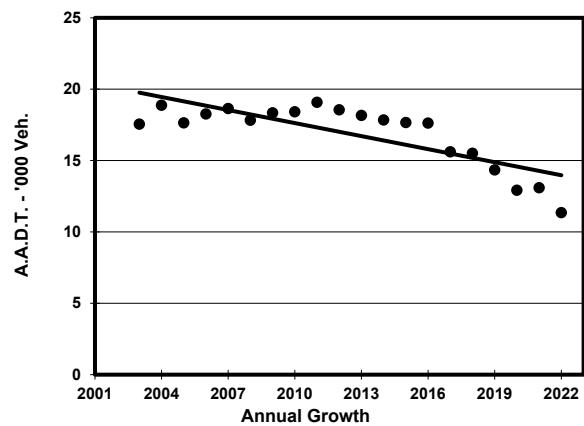
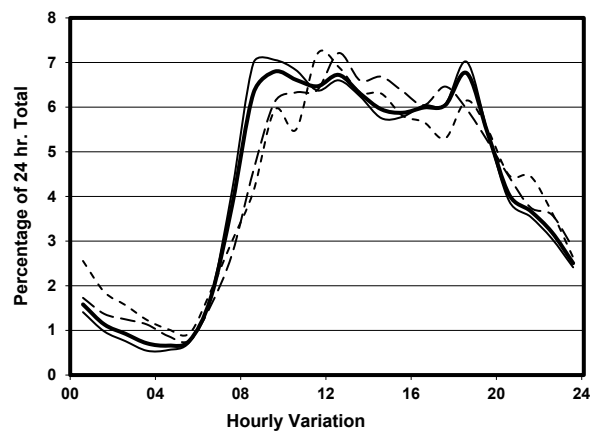
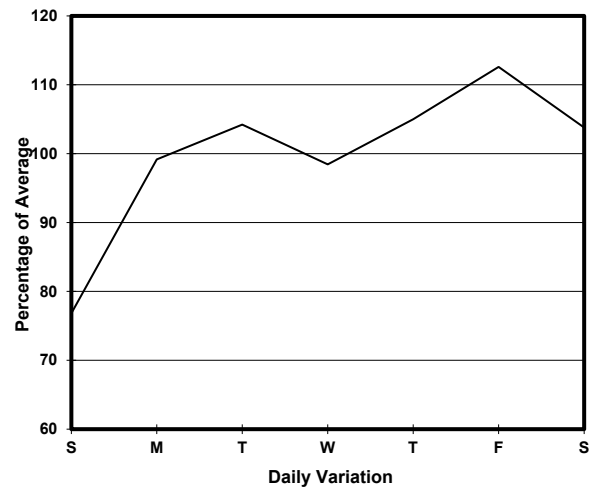
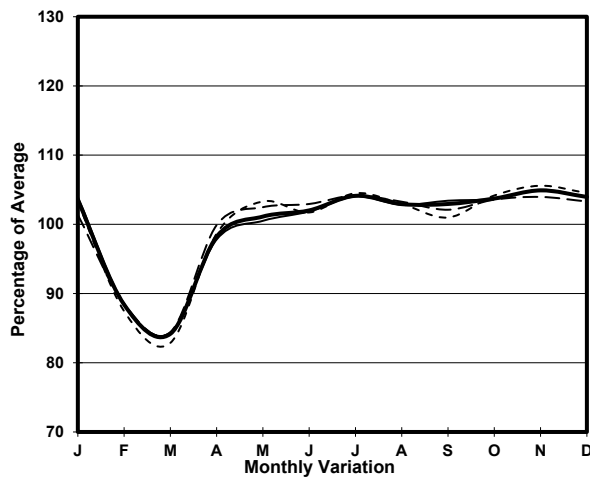
ROAD NETWORK

MAJOR

ROAD TYPE

DISTRICT DISTRIBUTOR

## 1. TRAFFIC FLOW VARIATION AND GROWTH



## 2. TRAFFIC CHARACTERISTICS (BY DIRECTION)

Parameter	All - Day	Mon. - Fri.	Sat.	Sun.
<b>SOUTH BOUND</b>				
A.A.D.T.	5310	5640	5740	3670
R 12 / 24 - %	75.5	76.8	74.3	67
R 16 / 24 - %	91.6	92.4	90.2	87.2
AM Peak Hour	0900-1000	0800-0900	0900-1000	0900-1000
One-way flow at AM peak hour	320	380	300	180
T - % (AM)	-	11.8	-	-
PM Peak Hour	1800-1900	1800-1900	1700-1800	1800-1900
One-way flow at PM peak hour	390	430	460	270
T - % (PM)	-	10.2	-	-
Prop.of commercial vehicles - 16 hr.	-	10.6	-	-
<b>NORTH BOUND</b>				
A.A.D.T.	6040	6230	6280	5320
R 12 / 24 - %	72.1	73.2	68.9	69.1
R 16 / 24 - %	88.6	89.4	86.9	85.7
AM Peak Hour	0900-1000	0900-1000	0900-1000	0900-1000
One-way flow at AM peak hour	450	480	440	350
T - % (AM)	-	7.7	-	-
PM Peak Hour	1800-1900	1800-1900	1800-1900	1600-1700
One-way flow at PM peak hour	380	410	350	300
T - % (PM)	-	3.5	-	-
Prop.of commercial vehicles - 16 hr.	-	5.6	-	-

## 3. OTHER INFORMATION AND COMMENT

**4. Vehicle classification and occupancy - Monday to Friday**

Time		Class of vehicle									
		Motor Cycle	Private Car	Taxi	Private LB	PLB	Goods veh.		Non Fr. Bus	Fr. Bus	
							Light	M & H		SD	DD
0700-0800	Pro	3.6	13.4	37.6	5.4	11.6	15.2	2.7	2.7	0.0	7.8
	Ocp	1.3	1.2	1.8	12.7	12.2	1.3	1.7	20.7	0.0	9.4
0800-0900	Pro	1.0	28.2	33.4	5.7	9.9	8.9	1.6	5.7	0.0	5.6
	Ocp	1.0	1.3	1.7	3.5	15.2	1.4	1.3	10.3	0.0	14.9
0900-1000 Peak hour	Pro	2.8	27.8	36.2	0.5	8.3	14.4	3.2	2.3	0.0	4.5
	Ocp	1.0	1.2	2.0	1.0	15.8	1.6	1.1	1.0	0.0	12.6
1000-1100	Pro	5.0	19.5	43.6	0.0	7.0	17.0	2.5	1.5	0.0	3.9
	Ocp	1.0	1.3	1.4	0.0	12.7	1.4	1.4	2.0	0.0	9.9
1100-1200	Pro	6.8	17.9	36.4	1.2	11.7	18.5	1.9	1.2	0.0	4.3
	Ocp	1.0	1.5	1.6	7.5	10.9	1.5	1.7	3.0	0.0	11.3
1200-1300	Pro	5.7	25.4	36.4	1.4	6.7	18.2	1.4	1.4	0.0	3.2
	Ocp	1.0	1.2	1.5	1.3	11.7	1.6	2.0	4.3	0.0	10.1
1300-1400	Pro	6.2	24.6	35.4	5.6	5.6	15.9	2.1	0.5	0.1	4.0
	Ocp	1.1	1.3	1.6	2.5	10.9	1.4	1.3	1.0	1.0	11.6
1400-1500	Pro	8.0	26.9	30.9	1.1	5.7	19.5	2.9	0.6	0.3	4.1
	Ocp	1.1	1.4	2.1	1.5	12.6	1.5	1.4	1.0	1.0	10.1
1500-1600	Pro	2.3	27.6	36.8	1.2	6.9	16.7	1.7	2.3	0.1	4.3
	Ocp	1.0	1.4	1.7	3.5	13.3	1.4	1.3	2.0	1.0	10.7
1600-1700	Pro	5.3	33.1	25.8	1.3	7.3	17.2	2.7	1.3	0.2	5.8
	Ocp	1.3	1.4	1.8	2.0	11.2	1.4	1.0	20.5	1.0	12.9
1700-1800	Pro	6.5	39.8	28.5	0.6	7.7	11.3	0.6	0.6	0.0	4.3
	Ocp	1.0	1.4	1.6	1.0	14.7	1.6	1.0	1.0	0.0	13.1
1800-1900	Pro	4.6	47.8	28.7	0.5	5.5	6.4	0.9	1.8	0.2	3.6
	Ocp	1.3	1.4	1.7	1.0	18.3	1.2	1.0	1.0	23.5	17.5
1900-2000	Pro	5.7	47.9	31.3	0.0	6.8	1.7	0.0	1.7	0.3	4.6
	Ocp	1.2	1.3	1.8	0.0	12.7	1.3	0.0	1.0	6.0	9.4
2000-2100	Pro	8.2	32.9	36.6	0.0	7.5	7.5	0.0	1.5	0.4	5.4
	Ocp	1.1	1.3	1.4	0.0	15.7	2.0	0.0	1.0	12.0	6.9
2100-2200	Pro	6.6	26.4	39.7	0.0	11.0	6.6	1.1	1.1	0.6	6.9
	Ocp	1.2	1.3	1.7	0.0	7.9	1.3	1.0	2.0	13.0	5.4
2200-2300	Pro	4.1	39.6	35.5	0.8	9.1	5.8	0.0	0.0	0.0	5.2
	Ocp	1.0	1.5	1.8	2.0	8.0	1.9	0.0	0.0	0.0	6.4
16 hours	Pro	5.1	30.3	34.4	1.6	7.8	12.8	1.6	1.7	0.1	4.6
	Ocp	1.1	1.4	1.7	4.2	12.9	1.5	1.3	5.8	8.8	11.0

**Legend: Pro.** Proportion of vehicles in % (Sum may not add up to 100% due to figure rounding)\*

**Ocp.** Average occupancy of vehicles including both driver and passengers\*

**M&H** Medium and Heavy

\* All traffic data are collected from combined bounds